

## 2.SUDAREA PRIN “ARC TRAS“ CICLU SCURT

### -Sisteme de sudura

(pentru serii mari de fabricatie sunt disponibile sisteme cu alimentare automata a bolturilor)

**NTR 800 G  
NTR 1200 G**



**NTR 600 A  
ALPHA 400  
ALPHA 850**



**Pistol de sudura  
P-NS40-SL**



### -Materiale si caracteristici de rezistenta la bolturi

- Otel carbon clasa 4.8 (St37- 3K)
- Otel inox 1.4301/1.4303
- Alama CuZn 37

Rm min = 420 N / mm<sup>2</sup>

Rm min = 500 N / mm<sup>2</sup>

Rm min = 350 N / mm<sup>2</sup>

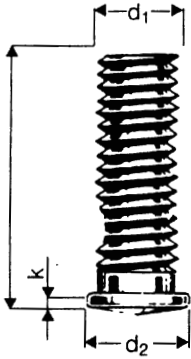
( Protectia disponibila la otel St37-37K: cuprat electrolitic C2E conf DIN 267 pag 9, alte acoperiri la cerere pentru cantitati mari )

-Filet rulat la rece, toleranta 6g conf DIN 13, pag 20

# Gama SC-B

## Bolturi filetate

Material: otel S235 J2G3+C450 (St 37-3K) cuprat electrolitic  
otel inox 1.4301 / 1.4303



Material: S235 J2G3+C450 (St 37-3K)

d <sub>1</sub> [mm]	l [mm]	Art. Nr.	d <sub>2</sub> [mm]	k [mm]
M 3	6	14-03-99	4,0	0,5
	8	14-01-02		
	10	14-00-53		
	12	14-00-54		
	16	14-01-06		
	20	14-01-08		
	25	14-04-02		
M 4	6	14-04-04	5,0	0,6
	8	14-00-17		
	10	14-01-10		
	12	14-01-11		
	16	14-01-13		
	20	14-00-16		
	25	14-03-13		
	30	14-02-58		
M 5	8	14-03-71	6,0	0,7
	10	14-01-16		
	12	14-01-17		
	16	14-01-19		
	20	14-01-20		
	25	14-01-22		
M 6	8	14-02-43	7,0	0,8
	10	14-00-91		
	12	14-00-75		
	16	14-00-12		
	20	14-01-23		
	25	14-00-33		
	30	14-03-38		
	35	14-03-78		
M 8	16	14-01-25	9,0	1,0
	20	14-00-06		
	25	14-00-19		
	30	14-00-21		
	35	14-04-10		

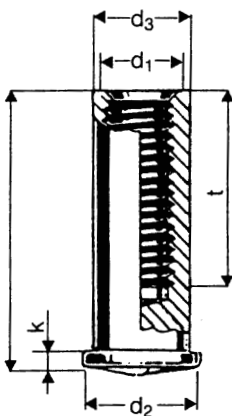
Material: 1.4301 / 1.4303

d <sub>1</sub> [mm]	l [mm]	Art. Nr.	d <sub>2</sub> [mm]	k [mm]
M 3	6	14-04-01	4,0	0,5
	8	14-01-03		
	10			
	12	14-01-05		
	16			
	20	14-01-09		
	25	14-04-03		
M 4	6		5,0	0,6
	8	14-04-06		
	10			
	12	14-01-12		
	16			
	20	14-01-15		
M 5	8	14-00-96	6,0	0,7
	10	14-00-20		
	12	14-01-18		
	16	14-00-97		
	20	14-01-21		
	25			
M 6	8	14-00-60	7,0	0,8
	10	14-00-68		
	12	14-00-92		
	16	14-00-69		
	20	14-01-24		
	25			
	30	14-03-01		
M 8	16	14-01-26	9,0	1,0
	20	14-00-84		
	25	14-00-83		
	30	14-02-32		
	35			

# Gama SC-I

## Bucse filetate

Material: otel S235 J2G3+C450 (St 37-3K) cuprat electrolitic



Material: S235 J2G3+C450 (St 37-3K)

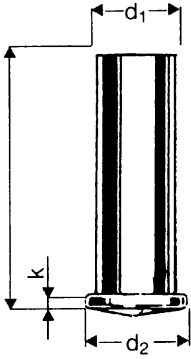
d <sub>1</sub> [mm]	l [mm]	Art. Nr.	d <sub>2</sub> [mm]	d <sub>3</sub> [mm]	k [mm]	t <sub>min</sub> [mm]
M 3	10	14-01-56	7,0	6,0	0,8	5
	12	14-01-58				
	16	14-01-60				
M 4	10	14-01-64	7,0	6,0	0,8	6
	12	14-01-66				
	16	14-01-68				
	20	14-01-70				
M 5	10	14-02-02*	9,0	7,1	1,0	10
	12					
	16					
	20					

\* Zincat

# Gama SC-S

## Stifturi (lise)

Material: oțel S235 J2G3+C450 (St 37-3K) cuprat electrolitic  
otel inox 1.4301 / 1.4303



Material: S235 J2G3+C450 (St 37-3K)

d <sub>1</sub> [mm]	l [mm]	Art. Nr.	d <sub>2</sub> [mm]	k [mm]
3	8	14-01-27	4,0	0,5
	10	14-02-08		
	12	14-00-94		
	16	14-01-30		
	20	14-01-32		
	25	14-00-05		
4	8	14-02-09	5,0	0,6
	10	14-01-35		
	12	14-01-37		
	16	14-00-87		
	20	14-00-66		
	25	14-01-41		
5	8	14-00-22	6,0	0,7
	10	14-00-11		
	12	14-01-43		
	16	14-01-45		
	20	14-00-28		
	25	14-01-48		
6	10	14-03-93	7,0	0,8
	12	14-01-50		
	16	14-01-52		
	20	14-01-53		
	25	14-00-77		
8	16	14-03-51	9,0	1,0
	20			
	25			

Material: 1.4301 / 1.4303

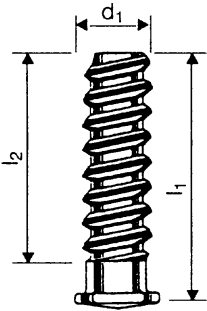
d <sub>1</sub> [mm]	l [mm]	Art. Nr.	d <sub>2</sub> [mm]	k [mm]
3	8	14-01-28	4,0	0,5
	10			
	12	14-01-29		
	16	14-01-31		
	20	14-01-33		
	25	14-01-34		
4	8		5,0	0,6
	10	14-01-36		
	12	14-01-38		
	16	14-01-39		
	20	14-01-40		
	25	14-01-41		
5	8		6,0	0,7
	10	14-03-70		
	12	14-01-44		
	16	14-01-46		
	20	14-01-47		
	25	14-01-49		
6	8	14-00-65	7,0	0,8
	10	14-00-76		
	12	14-01-51		
	16	14-00-81		
	20	14-01-54		
8	16		9,0	1,0
	20			
	25			

Alte dimensiuni si materiale disponibile la cerere

# Gama SC-Z

## Bolturi speciale filetate (filet brad)

Material: oțel S235 J2G3+C450 (St 37-3K) cuprat electrolitic  
otel inox 1.4301 / 1.4303



Tip A



Tip B

Material: S235 J2G3+C450 (St 37-3K)

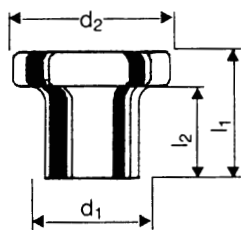
d <sub>1</sub>	l <sub>1</sub> [mm]	l <sub>2</sub> [mm]	Art. Nr.	
			Tip A	Tip B
5	9	6	14-00-89	14-00-52
	10	7	14-02-15	
	12	9	14-02-17	
	14,2	7,5		
	14,2	11	14-00-30	
	16	13	14-02-19	
	16,5	13,5	14-02-62	
	18,2	15	14-01-81	
	20	17	14-02-22	
	25	9		
	25	22	14-02-24	
	30	27	14-02-98	

Material: 1.4301 / 1.4303

d <sub>1</sub>	l <sub>1</sub> [mm]	l <sub>2</sub> [mm]	Art. Nr.	
			Tip A	Tip B
5	9	6	14-02-14	
	10	7	14-02-16	
	12	9	14-02-18	
	14,2	7,5		
	14,2	11	14-00-74	
	16	13	14-02-20	
	16,5	13		
	18,2	15	14-02-21	
	20	17	14-02-23	
	25	9		
25	22	14-02-25		
30	27			

utilizate pentru montarea clipsurilor de plastic

## Gama T



### Bolturi (gujoane) T

Material: oțel S235 J2G3+C450 (St 37-3K) cupret electrolic  
oțel inox 1.4301 / 1.4303

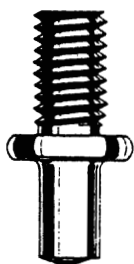
Material: S235 J2G3+C450 (St 37-3K)

d <sub>1</sub> [mm]	l <sub>1</sub> [mm]	Art. Nr.	d <sub>2</sub> [mm]	l <sub>2</sub> [mm]
3	4,0	14-03-94	5,05	3,0
	5,4		5,05	4,35

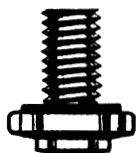
Material: 1.4301 / 1.4303

d <sub>1</sub> [mm]	l <sub>1</sub> [mm]	Art. Nr.	d <sub>2</sub> [mm]	l <sub>2</sub> [mm]
3	4,0	14-02-47	5,05	3,0
	5,4	14-02-37	5,05	4,35
5	10	14-02-56	9,0	8,2

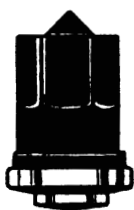
## Gama SC-KRB



### Bolturi distantier cu guler



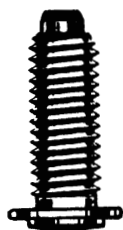
### Bolturi cu guler fara capison



### Bolturi cu guler cu capison

(protecție filet la vopsire)  
disponibil în varianta bolt de împănțare cu contrapiulita  
metalică închisă sau deschisă

## Gama W-TOP



### Bolturi filetate Standard

Material: oțel S235 J2G3+C450 (St37-3K) cuprat electrolic  
Clasa de rezistență 4.8 – 8.8

Datorită formei rotunjite a capului, utilizabil de exemplu și la airbaguri  
(evită tăierea airbagului)