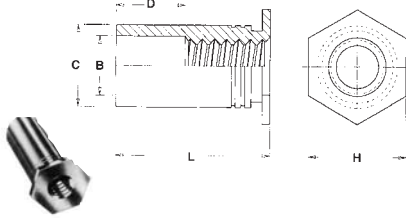


Distanriere, Cepuri autosertizate

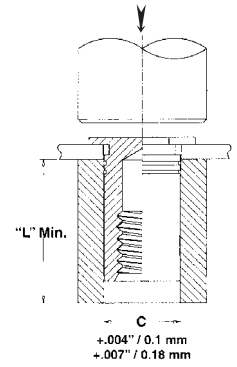
Tip SO
SON
SOA
SOS



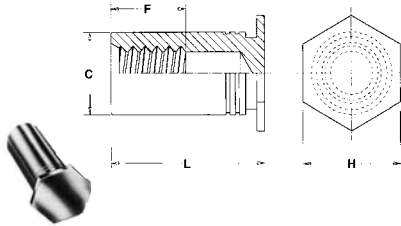
Cod filet	grosime minima tabla	∅ in tabla +0.08	∅ B ± 0.13	C -0.13	H Nom.	cota minima capat
M3	1.02	4.22	3.2	4.2	4.8	6
3.5M3	1.02	5.41	3.2	5.39	6.4	6.8
M3.5	1.02	5.41	3.9	5.39	6.4	6.8
M4	1.27	7.14	4.8	7.12	7.9	8
M5	1.27	7.14	5.35	7.12	7.9	8

Filet	Tip				Cod filet	Cod lungime "L" +0.05 -0.13																
	otel	otel	inox. otel	Al-aliaj		M3	M3.5	M4	M5	3	4	6	8	10	12	14	16	18	N/A	N/A	N/A	
M3 X 0.5	SO	SON	SOS	SOA	M3 3.5M3 ⁽¹⁾																	
M3.5 X 0.6					M3.5																	
M4 X 0.7	SO	SON	SOS	SOA	M4																	
M5 X 0.8					M5																	
D ±0.25						0				4				8				11				

MONTAJ
SO, SON, SOA, SOS
BSO, BSON, BSOA, BSOS



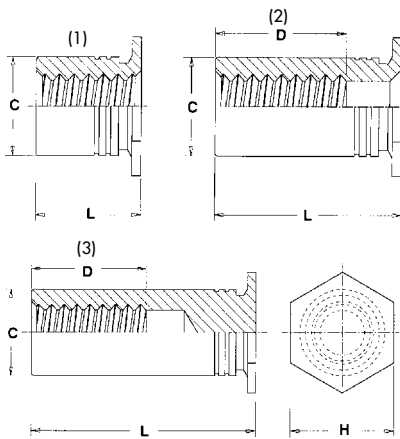
Tip BSO
BSON
BSOA
BSOS



Cod filet	Gros. min tabla	∅ in tabla +0.08	C -0.13	H Nom.	cota minima capat
M3	1.02	4.22	4.2	4.8	6
3.5M3	1.02	5.41	5.39	6.4	6.8
M3.5	1.02	5.41	5.39	6.4	6.8
M4	1.27	7.14	7.12	7.9	8
M5	1.27	7.14	7.12	7.9	8

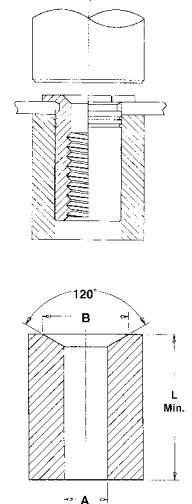
Filet	Tip				Cod filet	Cod lungime "L" +0.05 -0.13																
	otel	otel netratat	inox. otel	Al-aliaj		M3	M3.5	M4	M5	6	8	10	12	14	16	18	20	22	25			
M3 X 0.5	BSO	BSON	BSOS	BSOA	M3 3.5M3 ⁽¹⁾																	
M3.5 X 0.6					M3.5																	
M4 X 0.7	BSO	BSON	BSOS	BSOA	M4																	
M5 X 0.8					M5																	
F min						3.2	4	5	6.5					9.5								

Tip TSO
TSOS
TSOA



Cod filet	Grosime min. tabla	∅ in tabla +0.08	C -0.13	D min. filet	H Nom.	Cota min. capat
M25	0.63	4.2	4.19	5.2	4.8	5.8
6M25	0.63	5.4	5.38		6.4	7.1
M3	0.63	4.2	4.19	6.2	4.8	5.8
6M3	0.63	5.4	5.38		6.4	7.1
M35	0.63	5.4	5.38	7	6.4	7.1

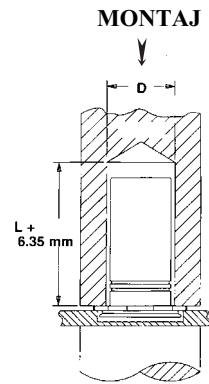
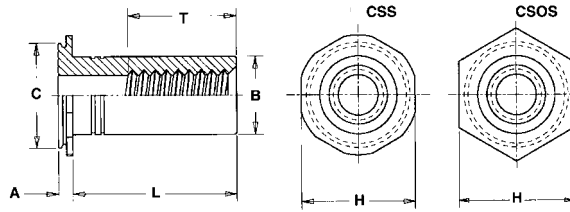
MONTAJ
TSO, TSOA, TSOS



Filet	Tip			Cod filet	Lungime "L" ± 0.08											
	otel	inox. otel	Al-aliaj		Cod lungime											
	2.00	3.00	4.00		6.00	8.00	10.00	12.00	14.00	16.00	18.00	19.00				
M25 X 0.45	TSO	TSOS	TSOA	M25	200 ⁽¹⁾	300 ⁽¹⁾	400 ⁽¹⁾	600 ⁽¹⁾	800 ⁽²⁾	1000 ⁽³⁾	1200 ⁽³⁾	1400 ⁽³⁾	1600 ⁽³⁾	1800 ⁽³⁾	1900 ⁽³⁾	
				6M25												
M3 X 0.5	TSO	TSOS	TSOA	M3	200 ⁽¹⁾	300 ⁽¹⁾	400 ⁽¹⁾	600 ⁽¹⁾	800 ⁽²⁾	1000 ⁽³⁾	1200 ⁽³⁾	1400 ⁽³⁾	1600 ⁽³⁾	1800 ⁽³⁾	1900 ⁽³⁾	
				6M3												
M3.5 X 0.6	TSO	TSOS	TSOA	M35	NA	300 ⁽¹⁾	400 ⁽¹⁾	600 ⁽¹⁾	800 ⁽¹⁾	1000 ⁽²⁾	1200 ⁽²⁾	1400 ⁽³⁾	1600 ⁽³⁾	1800 ⁽³⁾	1900 ⁽³⁾	

Tip CSS CSOS

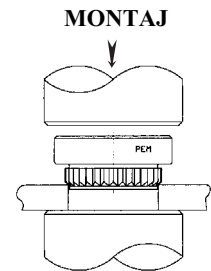
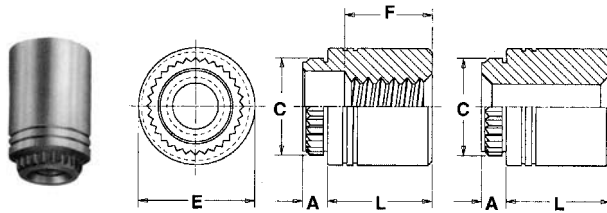
Pentru montaj in gauri infundate
in table grease min 1,6 mm



Filet	Tip	Cod filet	Cod lungime "L" +0.05 -0.13												Grosime min. tabla	Ø in tabla	adinc. min. gaura	A Max.	B Max.	C Max.	H Nom.	Cota min. capat
			4 ^h	6 ^h	8 ^h	10 ^h	12 ^h	16 ^h	20 ^h	25 ^h	1.6	1.09	5	1.09								
M3 X 0.5	CSS	M3	4 ^h	6 ^h	8 ^h	10 ^h	12 ^h	16 ^h	20 ^h	25 ^h	1.6	1.09	5	1.09	4.2	5.38	6.35	4.8				
	CSOS		2.4	1.91	1.91	1.91	1.91	1.91	1.91	1.91	1.91	1.91	1.91	1.91	1.91	1.91	1.91	1.91	1.91			
M4 X 0.7	CSS	M4	4 ^h	6 ^h	8 ^h	10 ^h	12 ^h	16 ^h	20 ^h	25 ^h	1.6	1.09	6.5	1.09	6.23	7.9	8.74	6.4				
	CSOS		2.4	1.91	1.91	1.91	1.91	1.91	1.91	1.91	1.91	1.91	1.91	1.91	1.91	1.91	1.91	1.91	1.91			
M5 X 0.8	CSS	M5 ^h	4 ^h	6 ^h	8 ^h	10 ^h	12 ^h	16 ^h	20 ^h	25 ^h	1.6	1.09	9.6	1.09	7.37	8.71	9.53	7.2				
	CSOS		2.4	1.91	1.91	1.91	1.91	1.91	1.91	1.91	1.91	1.91	1.91	1.91	1.91	1.91	1.91	1.91	1.91			
M6 X 1	CSOS	M6 ^h	4 ^h	6 ^h	8 ^h	10 ^h	12 ^h	16 ^h	20 ^h	25 ^h	2.4	9.9	1.91	9.6	1.91	9	9.88	11.11	9.5			

Tip KFE KFSE

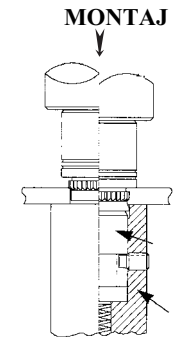
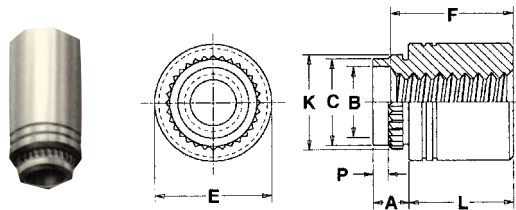
Pentru placi electronice



Filet	Tip	Cod filet	Cod lungime "L" ± 0.13												A Max.	Grosime min. tabla	Ø in tabla + 0.08	C ± 0.08	E ± 0.13	Cota min. capat
			3	4	6	8	10	12	14	16 ^h	1.5	1.5	4.2	4.68						
M3 X 0.5	(3)	KFE	KFSE	M3	3	4	6	8	10	12	14	16 ^h	1.5	1.5	4.2	4.68	5.56	4.4		
	(3)	3.6	KFE	KFSE	3.6	3	4	6 ^h	8 ^h	10 ^h	12 ^h	14 ^h	16 ^h	1.5	1.5	5.4	5.87	7.14	5.5	
(3)	4.2	KFE	KFSE	4.2 ^h	3	4	6	8	10	12	14	16	1.5	1.5	6.4	6.81	8.74	7.1		
												9.5 ± 0.4								

Tip KFB3

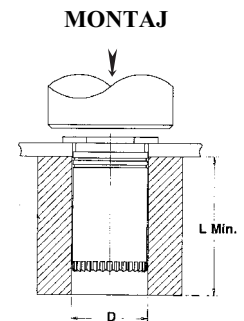
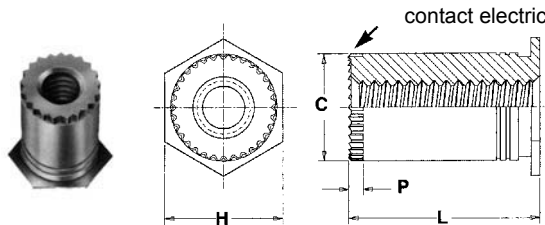
Pentru placi electronice



Filet	Tip	Cod filet	Cod lungime "L" ± 0.13												A Max.	grosime min. tabla	Ø in tabla +0.13 -0.03	B ± 0.08	C Max.	E ± 0.13	K ± 0.08	P ± 0.25	Cota min. capat
			2	3	4	6	8	10	12	14	16												
M3 X 0.5	KFB3	M3 ^h	2	3	4	6	8	10	12	14	16	2.28	1.27-1.65	4.2	3.2	4.21	5.56	4.55	1	4.33			
M4 X 0.7	KFB3	M4 ^h	2	3	4	6	8	10	12	14	16	2.28	1.27-1.65	6.4	5.23	6.4	8.74	6.68	1	6.36			
												9.5 ± 0.4											

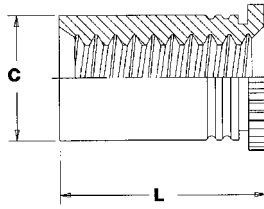
Tip SOSG SOAG

Pentru contact electric
in placi electronice

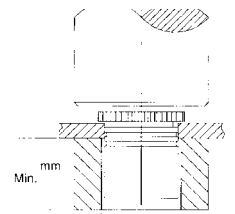


Filet	Tip	Cod filet	Cod lungime "L" +0.25								Grosime min. tabla	Ø in tabla + 0.08	C -0.13	H ± 0.25	P Nom.	Cota min. capat	D Ø
			3 ^s	4 ^s	6	8	10	12									
M3 X 0.5	SOSG	SOAG	3.5M3	3 ^s	4 ^s	6	8	10	12	1	5.4	5.38	6.4	0.76	6.8	5.5	

Tip DSO DSOS



MONTAJ

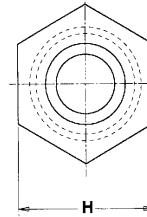
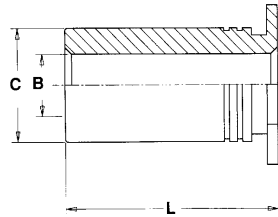


4.3 - 4.4 mm

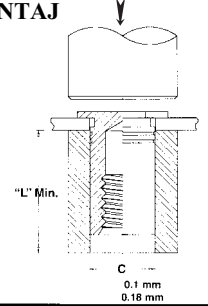
Filet	Tip		Cod filet	lungime	tabla	∅ in tabla +0.08	C -0.13	H Nom.	L +0.05 -0.13	Cota min. capat
	otel inox	otel								
M3 x 0.5	DSOS	DSO**	M3	6.35	0.94 - 6.35	4.2	4.19	4.92	6.35	3.2
				7						

Tip SO SOA SON SOS

Distanțier cu gaura de trecere (tipurile SO, SOA, SON, SOS nefiletate)



MONTAJ

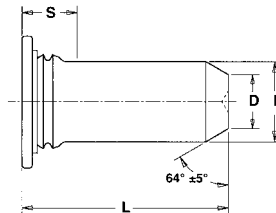


C
0.1 mm
0.18 mm

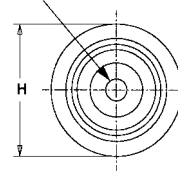
∅	Gros. min. tabla	∅ in tabla +0.8	C -0.13	H Nom.	cota min. capat
43.1	1	4.2	4.19	4.8	6
63.1	1	5.4	5.38	6.4	6.8
63.6	1	5.4	5.38	6.4	6.8
83.6	1.3	7.2	7.11	7.9	8
84.1	1.3	7.2	7.11	7.9	8
85.1	1.3	7.2	7.11	7.9	8

∅ +0.1 -0.08	Tip				Cod lungime "L" +0.05 -0.13										
	otel	otel netratat	inox. otel	Al-aliaj											
3.1	SO	SON	SOS	SOA	43.1	3	4	6	8	10	12	14	16	18	20
					63.1**										
3.6	SO	SON	SOS	SOA	63.6	3	4	6	8	10	12	14	16	18	20
					83.6**										
4.1	SO	SON	SOS	SOA	84.1	3	4	6	8	10	12	14	16	18	20
					85.1										

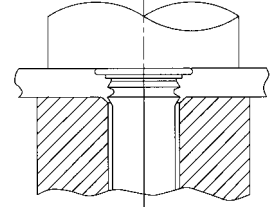
Tip TPS Cepuri de centrare



Trademark PEM



MONTAJ

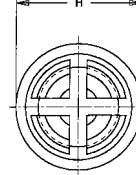
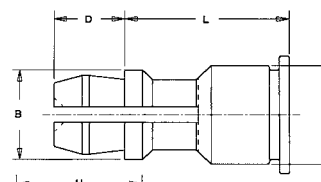


∅ cepu	Tip	Cod ∅ cepu	Cod lungime "L" ± 0.4				Grosime minima tabla	∅ in tabla +0.08	D ±0.15	H ±0.4	S Max.	Cota min. capat	
4	TPS	4mm	8	10	12	16	NA	1	4.5	2.82	6.12	2.29	7.1
5	TPS	5mm	NA	10	12	16	20	1	5.5	3.53	7.19	2.29	7.6
6	TPS	6mm	NA	NA	12	16	20	1	6.5	4.24	8.13	2.29	7.9

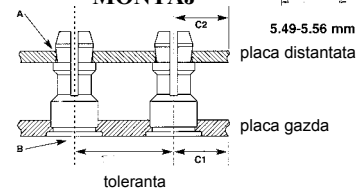
Tip SSS Clips distanțier pentru tabla

Al-silina	Tip	∅	Cod lungime "L" ± 0.13										B ±0.15	C Max.	D ±0.13	H ±0.13
SSA	SSS	SSC	4mm	8	10	12	14	16	18	20	22	25	4.77	5.38	3.58	6.35

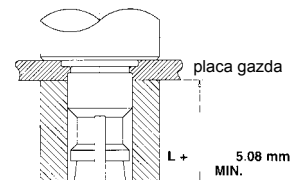
Tip	Placa 1					Placa 2					
	∅ B	Material	Duritate max.	Grosime material	C1 min.	toleranta	∅ A gaura	Material	Max duritate	grosimi intre	C2 min
SSA	5.4	Kov	HRB 50	1	6.6	±0.13	4	PCB/metal	nelimitat	1-1.8	2.5
SSS			HRB 60								
SSC			HRB 70								



MONTAJ

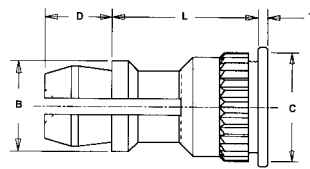
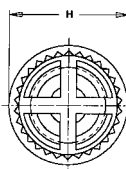


toleranta

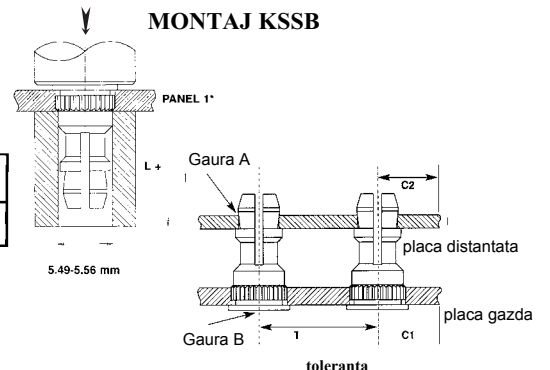


Tip KSSB

Clips distanțier pentru placi PCB - electronice



MONTAJ KSSB



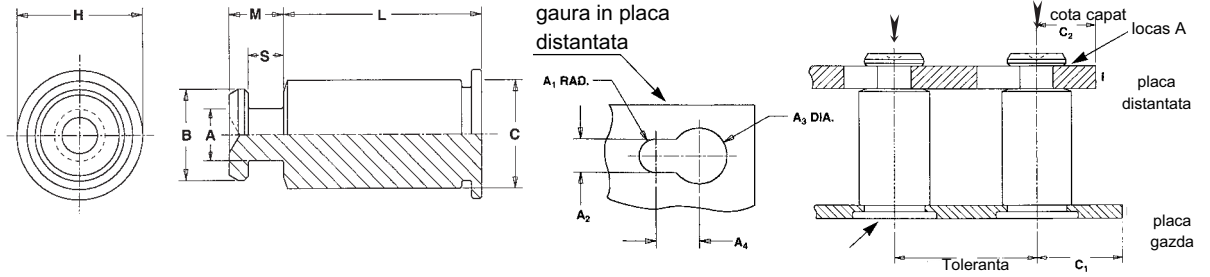
Tip	Placa distanțata	Cod lungime "L" ± 0.13						B ±0.13	C ±0.08	D ±0.13	H ±0.13	T ±0.13			
KSSB	4mm	8	10	12	14	16	18	20	22	25	4.77	5.74	3.58	6.35	0.51

Tip	Placa 1						Placa 2					
	∅ B	Material	Duritate max	grosime min.	C1 min	toleranta	∅ A	Material	Max. duritate	grosimi intre	C2 min	
KSSB	5.4	PC deska	HRB 65	1.25	5.6	±0.13	4	PC deska nebo plech	neomezno	1-1.8	2.5	

Tip SKC

-Distantier special

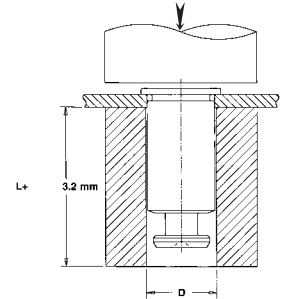
Otel Inox



Tip	Cod	Cod lungime L ± 0,13										A	B	C	S	M	H	D
otel inox		6	8	10	12	14	16	18	20 ^{NS}	22 ^{NS}	25 ^{NS}	± 0.08	± 0.08	Max.	± 0.08	Max.	Nom	∅y
SKC	61.5	6	8	10	12	14	16	18	20 ^{NS}	22 ^{NS}	25 ^{NS}	2.5	4.5	5.38	1.72	2.75	6.35	5.5

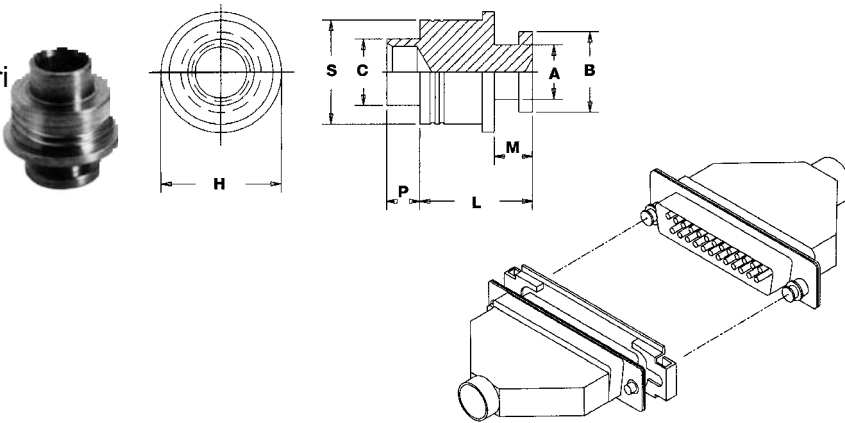
Tip	PANEL 1					PANEL 2				Material	Grosime	C2 min.
	B ∅	Max. duritate	min. grosime	C1 min	toleranta	locas A						
						A1 Nom.	A2 ± 0.08	A3 ± 0.08	A4 Min.			
SKC	5.4	HRB 70	1	6.6	± 0.13	1.5	3	5	3.75	PC Board or Metal	1.45-1.62	4.1

MONTAJ SKC

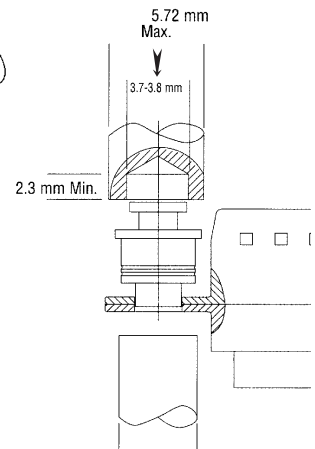


Tip SLPS

Pentru conectori



MONTAJ

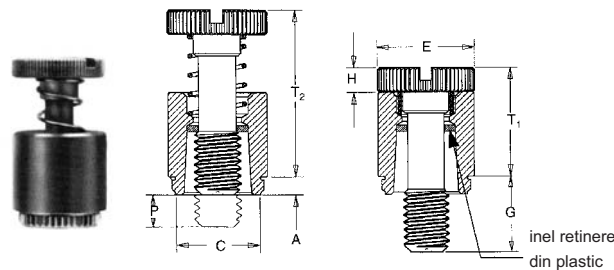


Tip	Cod margine	Grosime tabla	∅ gaura in conector	A ±.003	B ±.003	C Max.	H Non.	L ±.005	M Max.	P Max.	S ±.003	Cota minima capat
SLPS	120-172	.036 - .043	.120	.096	.143	.119	.218	.172	.073	.060	.188	.110

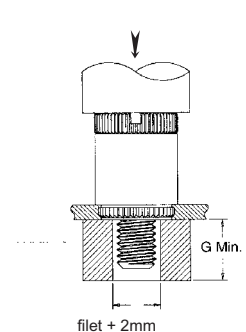
Elemente de panou cu sistem captiv

Tip PFK

pentru placi compozite sau cu duritate sub HRB 70



MONTAJ



Filet	Tip	Cod filet	Cod lungime surub	A Max.	Grosime material	∅ in placa + 0.08	C ± 0.08	E + 0.4 - 0.13	G ± 0.4	H ± 0.13	P ± 0.13	T1 Max.	T2 ± 1.02	Cota minima capat
M3 x 0.5	PFK	M3	40	1.5	1.5	6.75	7.28	8.2	6.4	1.83	0	9.1	13.8	5.1
			62 ^{NS}											
			84 ^{NS}											