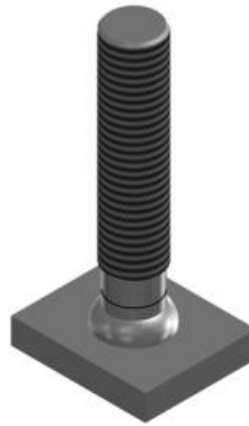


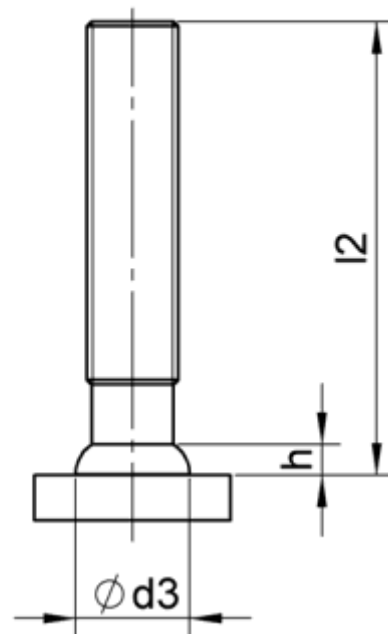
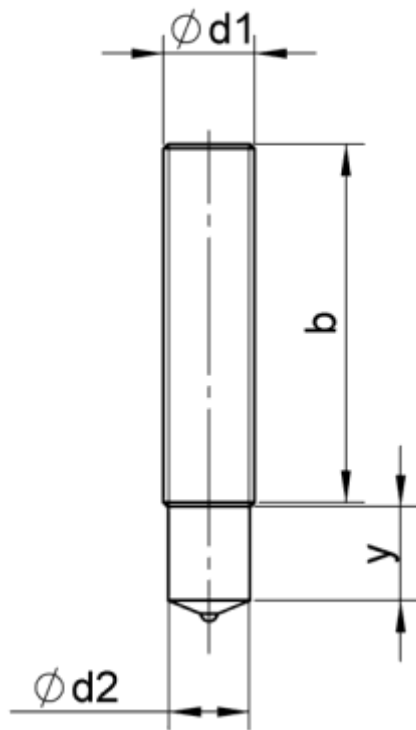
Bolturi filetate partial tip ARCPD



Inainte de sudura



Dupa



M6	$15 \leq l_2 < 35$	9	-	5,3	8,5	3,5
	$35 \leq l_2 < 60$	-	20			
	$60 \leq l_2 < 160$	-	40			
M8	$20 \leq l_2 < 50$	9	-	7,1	10	3,5
	$50 \leq l_2 < 160$	-	40			
M10	$20 \leq l_2 < 50$	9,5	-	8,95	12,5	4
	$50 \leq l_2 < 140$	-	40			
	$140 \leq l_2 < 160$	-	80			
M12	$25 \leq l_2 < 50$	11,5	-	10,8	15,5	4,5
	$50 \leq l_2 < 140$	-	40			
	$140 \leq l_2 < 160$	-	80			
M16	$30 \leq l_2 < 55$	13,5	-	14,6	19,5	6
	$55 \leq l_2 < 100$	-	40			
	$100 \leq l_2 < 160$	-	80			
M20	$35 \leq l_2 < 50$	15,5	-	18,3	24,5	7
	$50 \leq l_2 < 55$	-	35			
	$55 \leq l_2 < 80$	-	40			
	$80 \leq l_2 < 100$	-	50			
	$100 \leq l_2 < 160$	-	70			
M24	$50 \leq l_2 < 55$	20	-	22	30	10
	$55 \leq l_2 < 60$	-	30			
	$60 \leq l_2 < 70$	-	40			
	$70 \leq l_2 < 100$	-	50			
	$100 \leq l_2 < 160$	-	70			